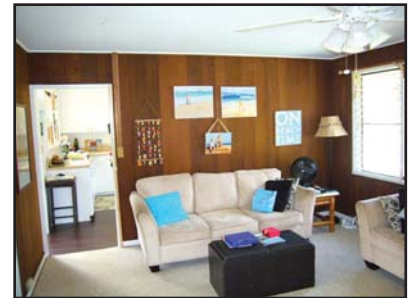




131 Aionoí Street

-KALAMA TRACT-

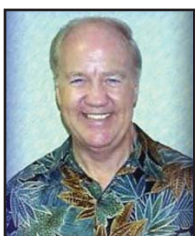


Charming cottage on large level 10,000 sq. ft. flag lot affords privacy - Great for expansion! Upgraded electrical to 200 amps. Contingent upon seller finding replacement property by way of 1031 exchange. Enclosed screen-in lanai. Interior configuration & sq. ft. differs from tax office records. Property to be sold in "As Is" condition. Tenant occupied 'til June 30, 2014. Steps to beach access.

Offered at \$979,000 (fee simple)

MLS: 201406572

- Bedrooms: 3
- Baths: 2
- Living Area: 980 sq.ft.
- Enclosed Patio (screened): 220 sq.ft.
- Monthly Taxes: \$220/mo.
- Lot area: 10,000 sq.ft.
- Year Built: 1956
- Parking: Carport (1-car)



Prepared by
James S. More (R) CRS

Cel phone: (808) 222-3949

Direct line: (808) 732-5069

Email: Jim@MoreHawaii.com

614 Kapahulu Ave , Honolulu, HI 96815