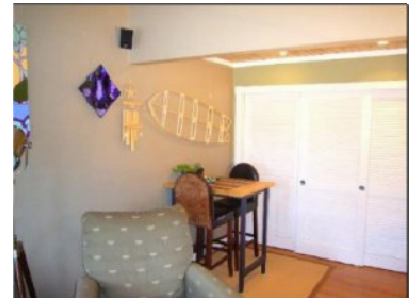




-Crosspointe-

284 Mananai Pl. apt. 3R



Upgraded w/laminate flooring & natural wood ceilings, new cabinet facings & Corian counters in the kitchen. Extra vanity & walk-in closet w/built-ins. **2-covered parking** (extra wide). Shows like a model-Excellent Value. Priced to sell...closing 45 days or less.

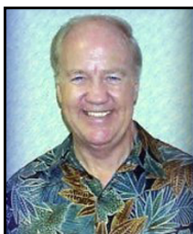
Offered at \$369,000 fee simple

MLS: 1108102

-Sold-



- Bedrooms: 2
- Baths: 1.25
- Monthly Taxes: \$74
- Maintenance Fee: \$168./mo
Association Fee: \$249./mo
Total: \$417./mo
- Living Area: 813 sq. ft.
- Lanai Area: 190 sq. ft.
- Total Area: 1,003 sq. ft.
- Parking: 2-Covered Parking (extra wide stalls)



Prepared by:

James S. More (R) CRS

Cel: (808) 222-3949

Email: Jim@MoreHawaii.com

614 Kapahulu Ave. Suite 200 Honolulu, HI 96815



Interior: 813

Exterior: 190 - 310

Lanai or Courtyard

(Limited Common Area)

Total Area: 1003-1123

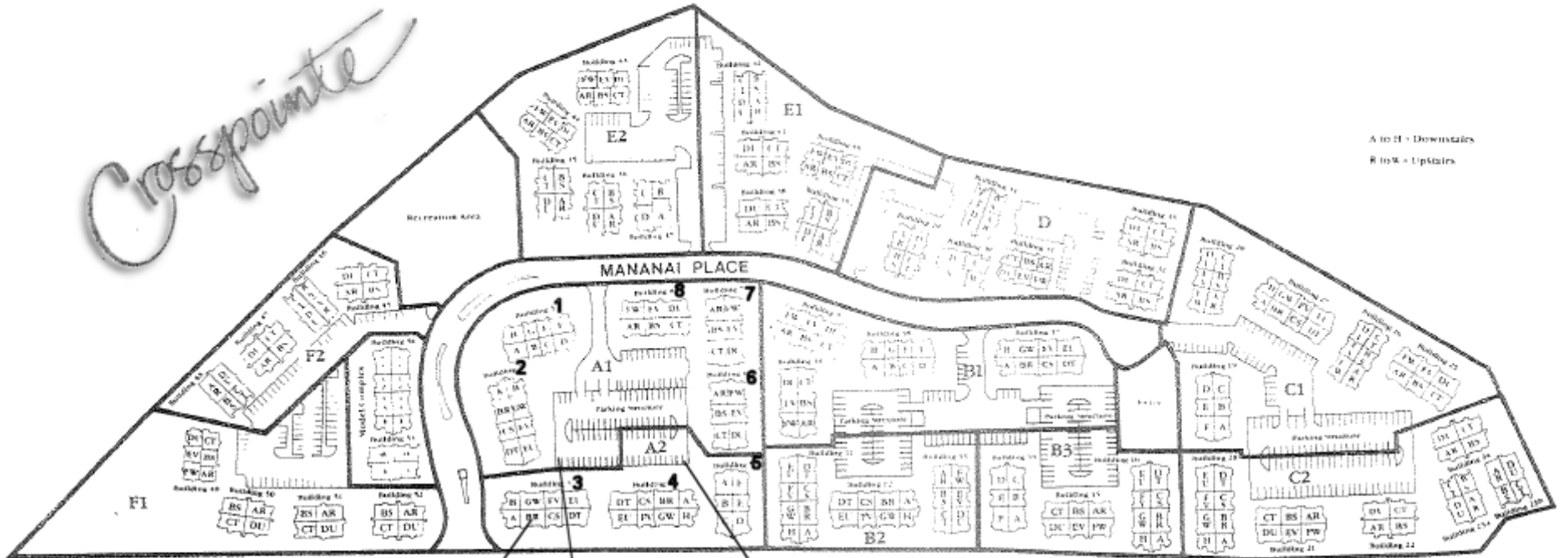
(Estimated Square Feet)

Model 5

2 Bedroom/1 1/4 Bath

Crosspointe

Crosspointe



A to H - Downstairs
R to M - Upstairs

284 Mananal Pl.
apt. 3R

2-Covered Parking
#106 & #84

Site Plan 
North